



WA Rock Climbing PROGRAM, Balcatta

January 13th

Summer 2024

WA Rock Climbing PROGRAMS

About Partner Programs

To meet a growing demand for more non-traditional sports, ASC is delighted to offer an expanded range of sports coaching programs for our customer's. ASC, has identified and partnered with reputable companies to offer the best possible experience for children looking for new personal challenges and something new and exciting. Train in top facilities, with expert qualified coaches, utilizing quality sport-specific equipment.

Over 40 years of Australian Sports Camps

Over 35 years of Australian Sports Camps Like ASC itself, our structured and progressive sports coaching programs continue to evolve, to keep up with the latest sporting trends and to provide your child the perfect opportunity to practice and develop their skills. Since 1982, ASC has committed to delivering the safest, most fun and best school holiday sports programs in Australia. And, everyone at ASC passionately believes that, 'Life's better with sport'.

Camps for all Abilities

ASC Partner Programs are perfect for beginners through to advanced players. So, we welcome participants aged 5-14 of all skill levels. Children are grouped according to their age, ability, and friendships. This maximises enjoyment right from the start and ensures that your child's specific skill requirements are appropriately coached throughout the camp.

REVIEWS

SIMON.M – ACT PARENT

Very good camp thanks, with special thanks to the coach, who was outstanding.

SUSAN.H – WA PARENT

I liked that even though my child didn't know other people, she made friends in the 3 days. It was great to see that team efforts and respecting one another were encouraged.

LEANNE.M – VIC PARENT

It was so easy to book. I really appreciated that you let me book for 2 days out of the 3 due to my child's other commitments. The camp was well run and my son had a lot of fun. Would definitely do it again!



ABOUT THE CAMP

WA Rock Climbing Program Balcatta

January 13th

Location

Rockface Indoor Climbing Centre,
7B Ledger Road,
Balcatta, WA.

Time

The camp runs from 9:00am to 3:00pm each day. However, we do advise that you bring your child a little earlier to ensure we can check them in and be started ready to go at 9:00am.

Sample Day

- 09:00 - Harnessing and safety instruction.
- 09:15 - Climbing instruction demonstration and supervised climbing according to individual ability.
- 10:15 - Drinks / snack break.
- 10:30 - High ropes training and completion of set challenges.
- 11:15 - Technical learning; tie a figure 8 knot.
- 12:00 - Lunch
- 12:45 - Bouldering techniques and climbing on the small boulder wall.
- 01:30 - Advanced climbing, roping and parkour techniques.
- 02:00 - Drinks / snack break.
- 02:10 - Climbing challenges (with coaching).
- 02:50 - Warm down & debrief.
- 03.00 - Pick-up.

Partner

Rockface Climbing Gym.



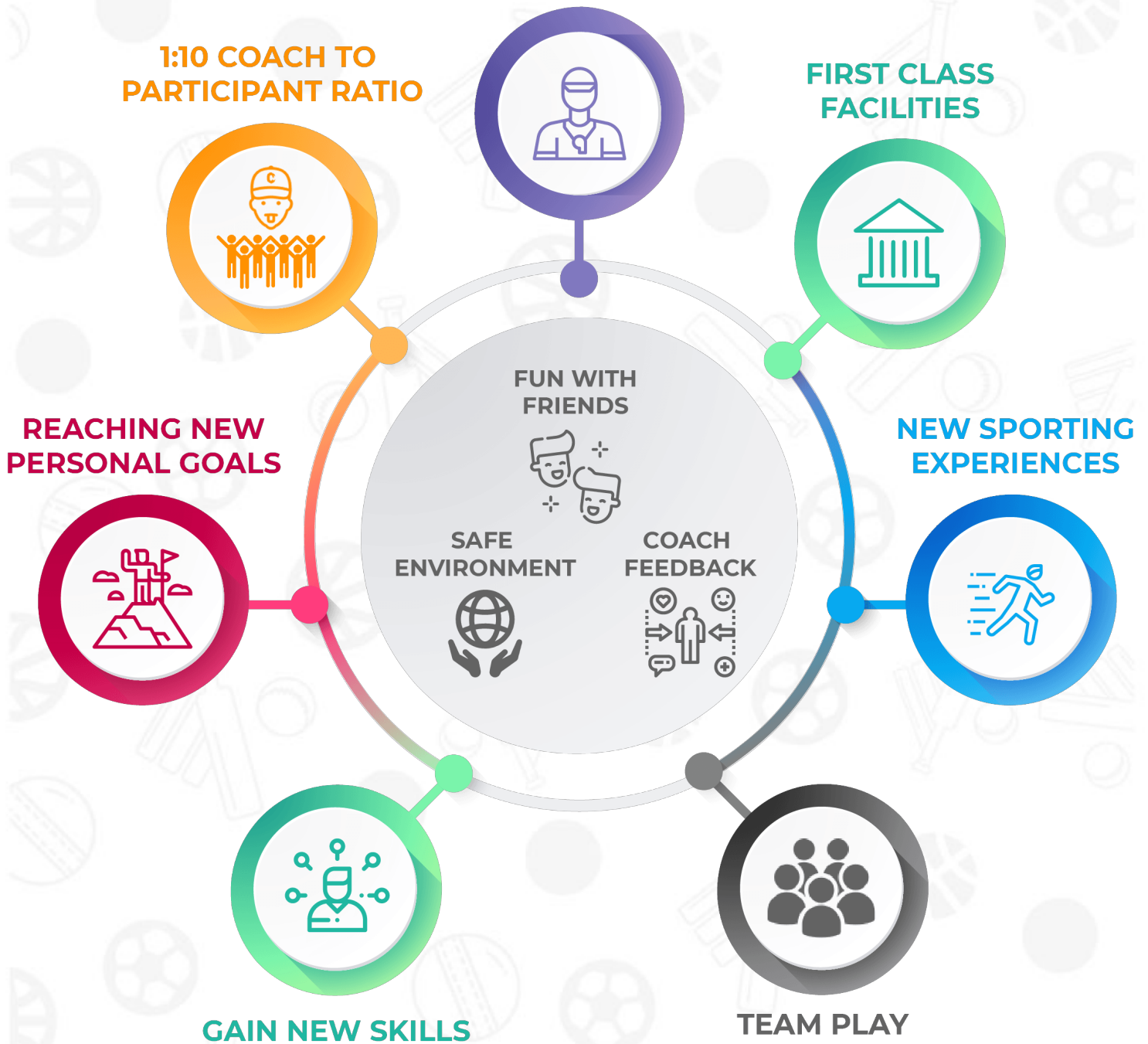
- Rockface is Perth's biggest and safest climbing venue, with the gym reaching 9m at its highest point.
- Route difficulty ranges from very easy (suitable for younger children) to very hard (suitable for experienced climbers out for a challenge). To keep climbers interested year-round, Rockface employs creative route-setters. So, the climbs are always changing. New top-rope routes are set every week and lead and bouldering areas are changed regularly.

WHY ASC?

For Over 40 years, Australian Sports Camps have been recognised for the quality of our coaching staff and the delivery of our structured improvement-oriented programs that greatly enhance your child's sporting skills.

All of our coaches are qualified and experienced, many having played and/or coached at the highest levels. Whether your child is trying the sport for the first time or is very experienced, our coaches will be able to deliver a program for their specific capabilities.

EXPERIENCED COACHES



INFORMATION & FAQs

What to Expect

Our camps offer expert training, first class facilities and utilise quality equipment, providing a great opportunity for your child to personally develop and improve their sporting skills. Each camp offers a structured and tailored program. With an average child to coach ratio of 10:1, we can guarantee that every child receives individual attention and care to enhance their experience and training at the camp.

Safety

Our first priority is always the happiness, enjoyment and safety for all of our participants.

We have qualified first aid capability on site at all times and apply a ZERO-tolerance policy towards bullying, disrespectful or unsafe behaviour. We value diversity and all staff, volunteers, students, children, parents and visitors must keep to our strict code of behaviour so that we continually strive to provide a safe and supportive environment for all.

We promote and adhere to the SunSmart recommendations of the Cancer Council of Victoria and therefore adopt many sun protection measures including sunscreen, hats and shade.

FAQ's

ARE ASC PROGRAMS RIGHT FOR MY CHILD?

Yes! Programs are suitable for all ages and all skill levels as kids are grouped according to their age, ability and whether or not they want to be with their friends/siblings.

WHAT SHOULD MY CHILD PACK FOR CAMP?

Just like school, kids should bring their own lunch and snacks in a clearly named lunch box/bag and a drink bottle.

Comfortable sports clothing should be worn to our camps. Children are welcome to train with their own sports equipment. However, there will be additional equipment available.

WHAT HAPPENS AFTER I BOOK ONLINE?

Once your booking is processed, you will be emailed a confirmation link with full details on the camp. Confirmation information will be resent to all families one week prior to camps starting.

For other frequently asked questions, please visit our website.

Life's Better With Sport!

For more information on ASC's sports camp programs please visit our website www.australiansportscamps.com.au or call us on **1300 914 368**.



admin@australiansportscamps.com.au



@AustSportsCamps



@AustralianSportsCamps



@AustSportsCamps